

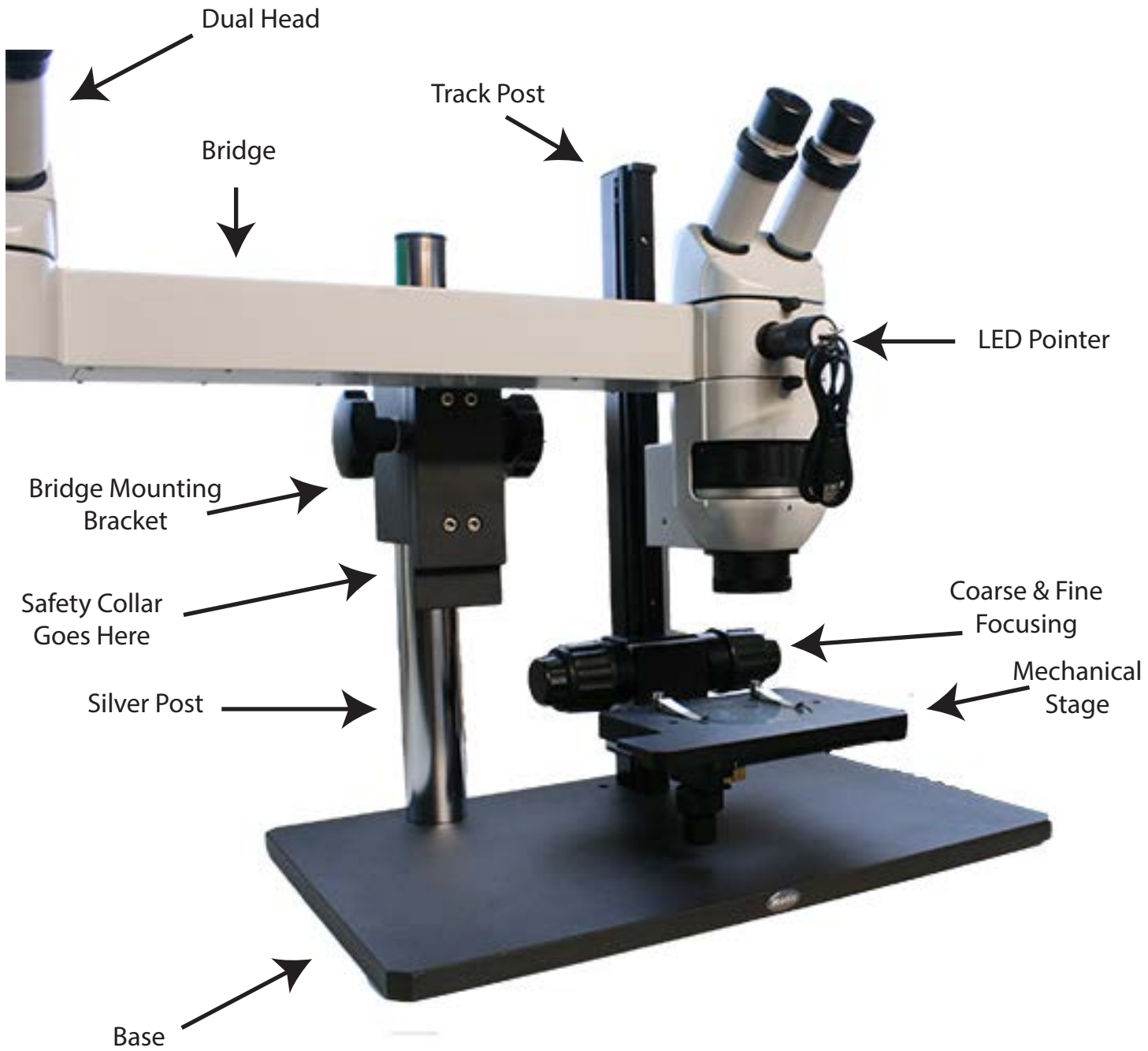


MicroscopeWorld

MWDVS Dual Head CMO Stereo Microscope Assembly Instructions



MWDVS Diagram



MWDVS Step by Step Assembly

1. Connect the black track post (see pg. 2 diagram) into the center of the base with the supplied silver screws using the allen wrench.



2. Connect the silver post (see pg. 2 diagram) into the left of the base with the supplied black screws using the allen wrench.



3. Slide the safety collar onto the silver post and tighten in place with the allen wrench.

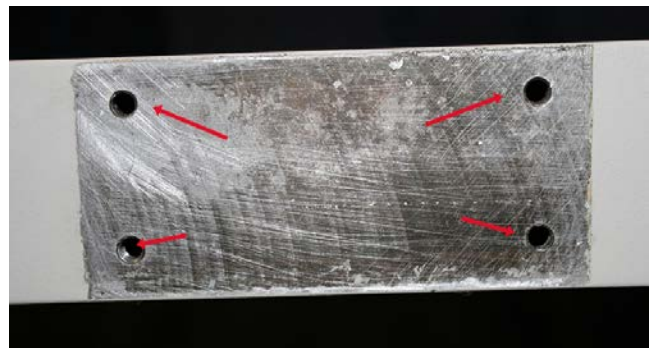


MWDVS Step by Step Assembly

4. Slide the bridge mounting bracket onto the silver post and tighten the locking screw.



5. On the back of the bridge locate the four drilled holes for mounting the bridge to the mounting bracket shown below.



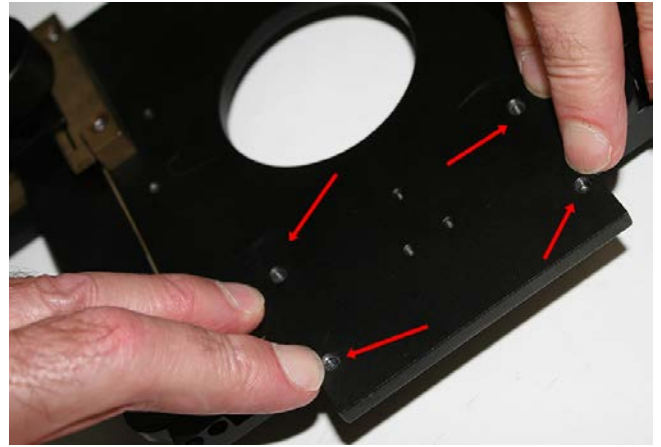
6. Line the optical bridge up with the mounting bracket and screw the screws in from the back of the bracket toward the optical bridge.



www.MicroscopeWorld.com
info@microscopeworld.com
1-760-438-0528

MWDVS Step by Step Assembly

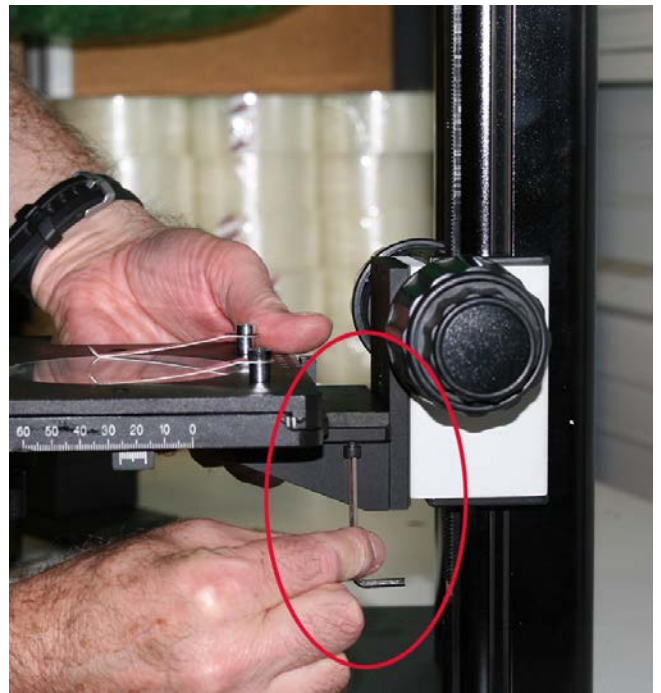
7. On the bottom of the mechanical stage locate the four holes for mounting the stage to the focusing holder on the track stand.



8. On the focusing holder locate the four holes that will match up with the mechanical stage shown above.



9. Screw the four screws into the mechanical stage from beneath the stage using the allen wrench.

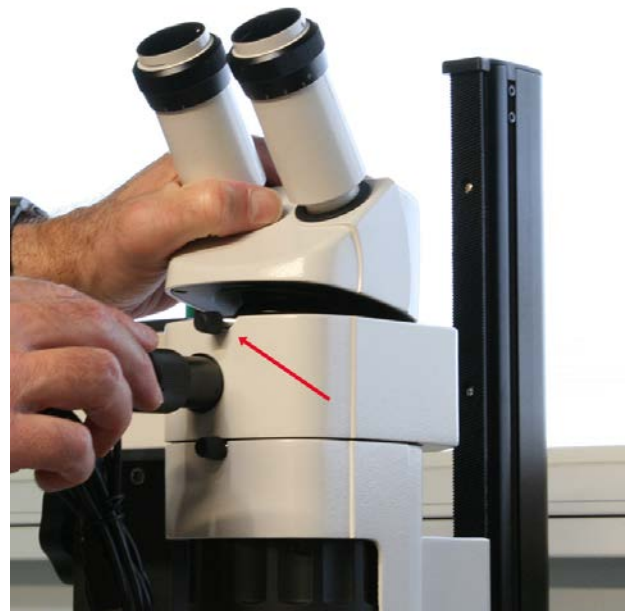


MWDVS Step by Step Assembly

10. Connect the stereo microscope body and tighten the set screw.



11. Connect the stereo microscope head and tighten the set screw.



12. Connect the observer head and tighten the set screw.



www.MicroscopeWorld.com
info@microscopeworld.com
1-760-438-0528

MWDVS Step by Step Assembly

13. Place the eyepieces into each microscope head.



www.MicroscopeWorld.com
info@microscopeworld.com
1-760-438-0528