

# KL Gooseneck Light Guides

for KL Light Sources



These are flex and stay light guides that remain in place after positioning, providing flexible and obedient incident illumination for space-constrained applications.

## Features:

- Available with one, two or three branches.
- Available as 2-branch Gooseneck plus flexible branch (Combi Light Guide).
- Focusing optics and filter accessories available.
- High white light transmission thanks to the use of SCHOTT PURAVIS® fibers.

## Advantages:

- Perfect trade-off between flexibility and mechanical stability.
- Mechanical stability enables long-term usability and precise positioning for complete control of light placement.
- The Combi Light Guide can be fixed stationary at the microscope post.

## Types and compatibility

Type	Compatible cold light source	Part No.	Length	End tip Ø	End tip length	Active Ø branch	Active Common end Ø	Outer Ø Jacketing	Light source adapter Ø
			(L)	(E)	(l)	(b)	(B)	(D)	(F)
1- branch	KL 300 LED	170.101	500 mm 19.69"	6 mm 0.24"	20 mm 0.79"	3.5 mm 0.14"	5 mm 0.20"	11 mm 0.43"	9 mm 0.35"
	KL 1600 LED KL 2500 LED KL 1500 HAL	154.101	600 mm 23.62"	6 mm 0.24"	20 mm 0.79"	4.5 mm 0.18"	4.5 mm 0.18"	11 mm 0.43"	10 mm 0.39"
2- branch	KL 300 LED	170.202	500 mm 19.69"	6 mm 0.24"	20 mm 0.79"	3.5 mm 0.14"	5 mm 0.20"	11 mm 0.43"	9 mm 0.35"
	KL 1600 LED KL 2500 LED KL 1500 HAL	154.202	600 mm 23.62"	6 mm 0.24"	20 mm 0.79"	4.5 mm 0.18"	6.4 mm 0.26"	11 mm 0.43"	10 mm 0.39"
3- branch	KL 1600 LED KL 2500 LED KL 1500 HAL	154.302	600 mm 23.62"	6 mm 0.24"	20 mm 0.79"	4.5 mm 0.18"	7.8 mm 0.31"	11 mm 0.43"	10 mm 0.39"
Combi Light guide:  2-branch Gooseneck  <b>and</b>  1-branch Flexible Light Guide	KL 300 LED KL 1600 LED KL 2500 LED KL 1500 HAL	170.402	(L) 500 mm 19.69"  (L*) 800 mm 31.50"	 6 mm 0.24"	 20 mm 0.79"	 4.5 mm 0.18"	 6.4 mm 0.26"  randomized	(D) 11 mm 0.43"  (D*) 14 mm 0.55"	9 mm 0.35"  <b>and</b>  10 mm 0.39"

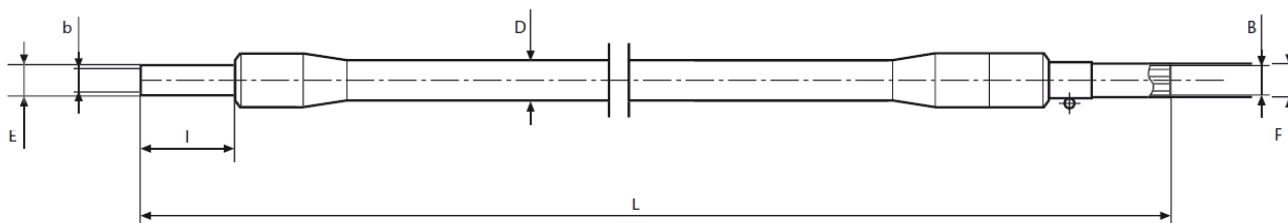
For compatibility with discontinued SCHOTT light sources and third party products, please contact us.

We provide a variety of optical and mechanical accessories for our KL light guides. For details please refer to our system diagrams or according datasheets.

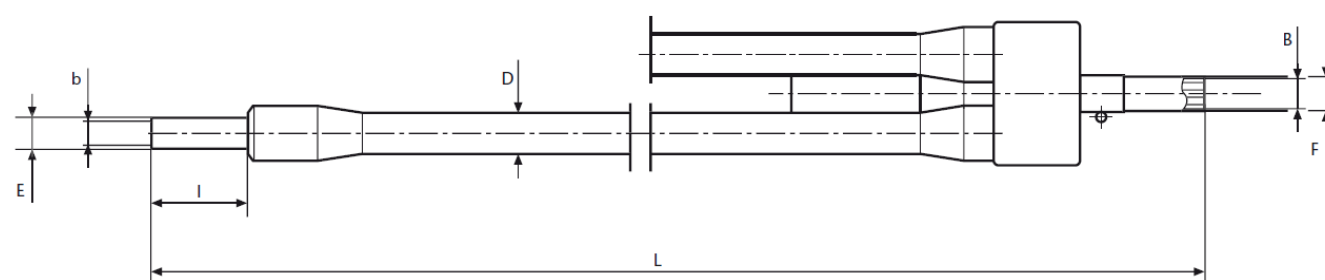
Version 03.2020

**SCHOTT**  
glass made of ideas

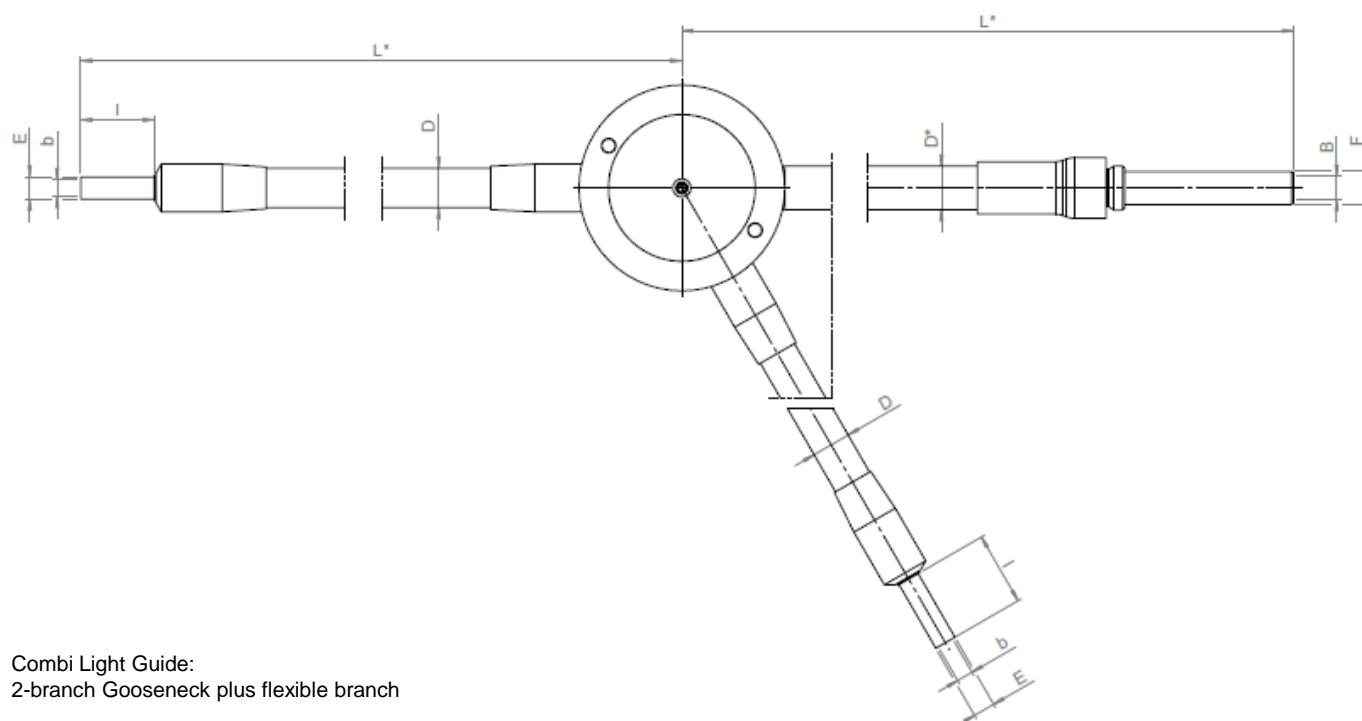
## Dimensions



1-branch



2- and 3-branch



Combi Light Guide:  
2-branch Gooseneck plus flexible branch

Pictures are provided for illustration purposes only, and may not provide an accurate reflection of the actual product.



info@microscopeworld.com | 800-942-0528

All specifications are subject to change without prior notice. This datasheet or any extracts thereof may only be used in other publications with express permission of SCHOTT. © SCHOTT AG

Lighting and Imaging  
**SCHOTT AG**  
Hattenbergstrasse 10  
55122 Mainz  
Germany

Phone: +49 (0) 6131/66-7796  
Fax: +49 (0) 6131/66-7850  
info.microscopy@schott.com  
www.schott.com/microscopy

**SCHOTT**  
glass made of ideas