

# ColdVision Back Lights

for ColdVision light sources



SCHOTT ColdVision Back Lights can be used to create a crisp edge definition or soft, diffuse incident light for a range of applications with limited space. Those applications include glass inspection, edge detection, photography and instrumentation display.

## Features:

- All units come with a protective IR filter.
- The back light housing is made of rugged, black anodized aluminum.
- The fiber bundle is protected with flexible PVC covered metal tubing.
- Dual and quad backlights increase lighting versatility.

## Advantages:

- Compact, low profile housing fits in small spaces.
- The white acrylic diffuser plate and calibration process provides the optimum combination of uniformity and intensity.

## Single and Dual Back Lights

| Description                  | Single Back Light                       |                                       |  |                                       | Dual Back Light                         |  |
|------------------------------|---|---------------------------------------|--|---------------------------------------|---|--|
| Part No.                     | A08920                                  | A08923*                               | A08925                                 | A08927                                | A08922*                                 | A08926                                 |
| Housing Dimensions (A, B, C) | 4" x 2.6" x .59"<br>(102 x 66 x 14.9mm) | 6" x 3.5" x .75"<br>(152 x 89 x 16mm) | 9" x 5" x .78"<br>(229 x 127 x 19.7mm) | 12" x 9" x 1"<br>(305 x 229 x 25.4mm) | 4" x 2.6" x .59"<br>(102 x 66 x 14.9mm) | 9" x 5" x .78"<br>(229 x 127 x 19.7mm) |
| Active Area (D)              | 2" x 2"<br>(51 x 51mm)                  | 3" x 3"<br>(76 x 76mm)                | 4" x 4.88"<br>(102 x 124mm)            | 8" x 8"<br>(203 x 203mm)              | 2" x 2"<br>(51 x 51mm)                  | 4" x 4.88"<br>(102 x 124)              |
| Overall Bundle Length (E)    | 40"<br>(1016mm)                         |                                       |  |                                       | 42"<br>(1067mm)                         | 37"<br>(940mm)                         |
| Common Bundle Length (F)     | N/A                                     | N/A                                   | N/A                                    | N/A                                   | 10"<br>(254mm)                          | 10"<br>(254mm)                         |
| Active Input Diameter (G)    | .28"<br>(7.0mm)                         | .32"<br>(8.1mm)                       | .39"<br>(9.9mm)                        | .55"<br>(13.97mm)                     | .39"<br>(9.9mm)                         | .55"<br>(13.97mm)                      |
| Ferrule Diameter (H)         | .87"<br>(22.1mm)                        |                                       |  | .87"<br>(22.1mm)                      | .87"<br>(22.1mm)                        | .98"<br>(24.9)                         |
| Coupler Diameter (I)         | N/A                                     | N/A                                   | N/A                                    | N/A                                   | 1.38"<br>(34.9mm)                       | 1.50"<br>(38.1mm)                      |
| Tubing Diameter (J, K)       | .47"<br>(12mm)                          | .60"<br>(15mm)                        | .68"<br>(17.3mm)                       | .83"(21 mm)                           | .47"/.67"<br>(12/17mm)                  | .68"/.83"<br>(17/21mm)                 |
| Bend Radius                  | .6"<br>(15mm)                           | 1"<br>(25mm)                          |  | .6"<br>(15mm)                         | .6"/1.2"<br>(15/30mm)                   | 1/1.5"<br>(25/38mm)                    |
| Gray Scales <sup>1</sup>     | ±13                                     |                                       |  | ±15                                   | ±13                                     | ±13                                    |

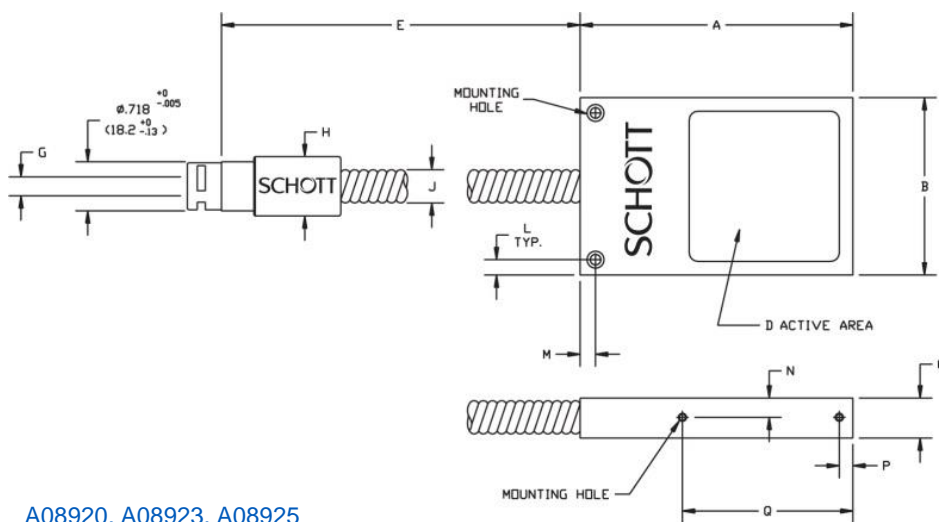
\* Made-to-order products

<sup>1</sup> Uniformity scans are available upon request

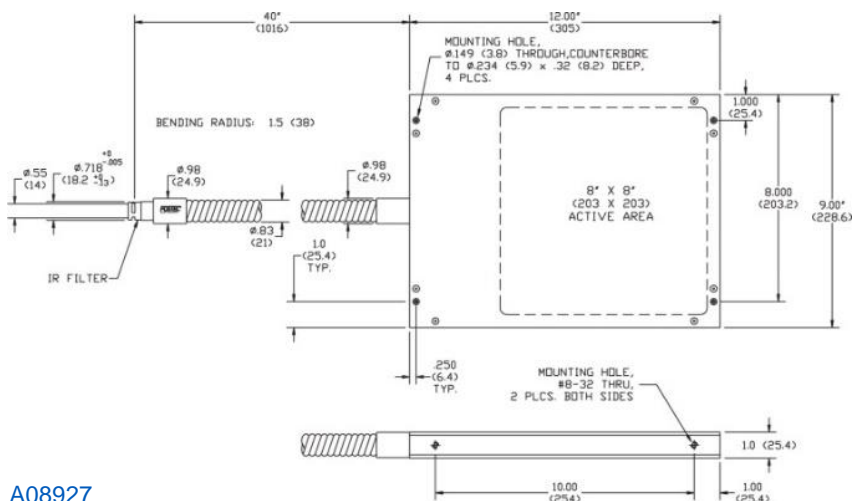
Custom configurations available. Compatible accessories available. See ColdVision-Accessories data sheet.

**SCHOTT**  
glass made of ideas

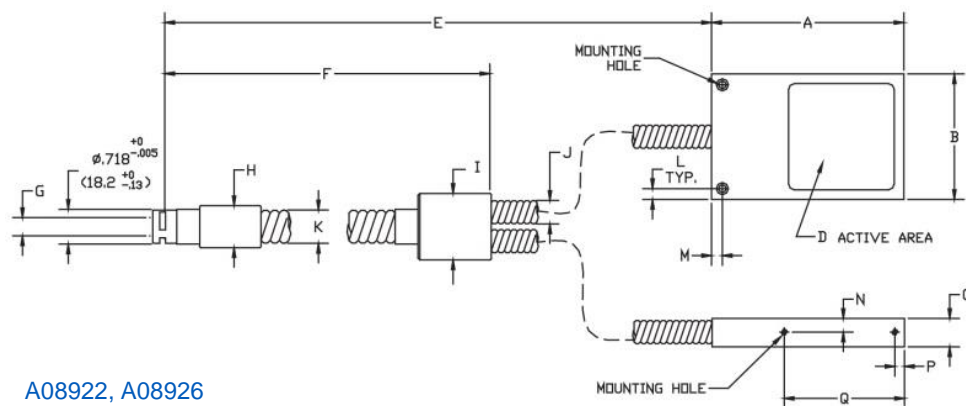
## Single and Dual Backlight: Dimensions



A08920, A08923, A08925



A08927



A08922, A08926

**Warning :** This product is manufactured with glass fiber. Not for use in cable/hose carrier. Call SCHOTT to discuss moving cable/hose carrier applications.

All specifications are subject to change without prior notice. This datasheet or any extracts thereof may only be used in other publications with express permission of SCHOTT. © SCHOTT North America, Inc.

Lighting and Imaging  
**SCHOTT North America, Inc.**  
 122 Charlton Street  
 Southbridge, MA 01550  
 USA  
 Phone: +1 (508) 765-9744  
 Fax: +1 (508) 765-1299  
 lightingimaging@us.schott.com  
 www.us.schott.com/coldvision



MicroscopeWorld

info@microscopeworld.com | 800-942-0528

Dimensions in ( ) are in mm

**SCHOTT**  
 glass made of ideas