



PowerPose

High Intensity Spot Lights

TechniQuip's PowerPose Series is Focused High Intensity LED Lighting for Microscopy and Precision Tasks.



**STEEL
HOUSING**



**ESD SAFE
(OPTIONAL)**



**ULTRAVIOLET
(OPTIONAL)**



**CHANNELS
(STANDARD)**

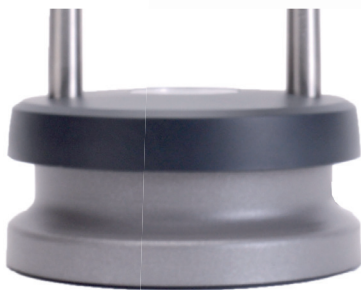
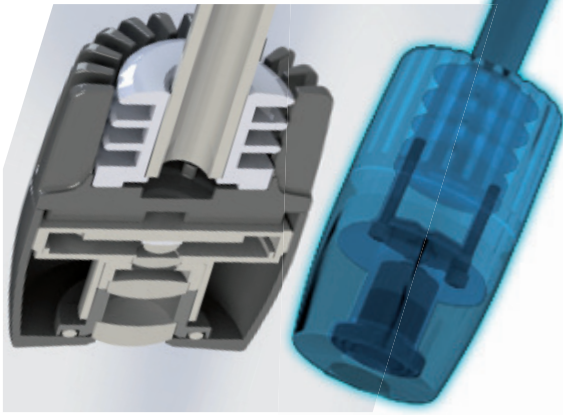


**CAPACITIVE
TOUCH DIMMER**



**FOCUSED
BEAMS**

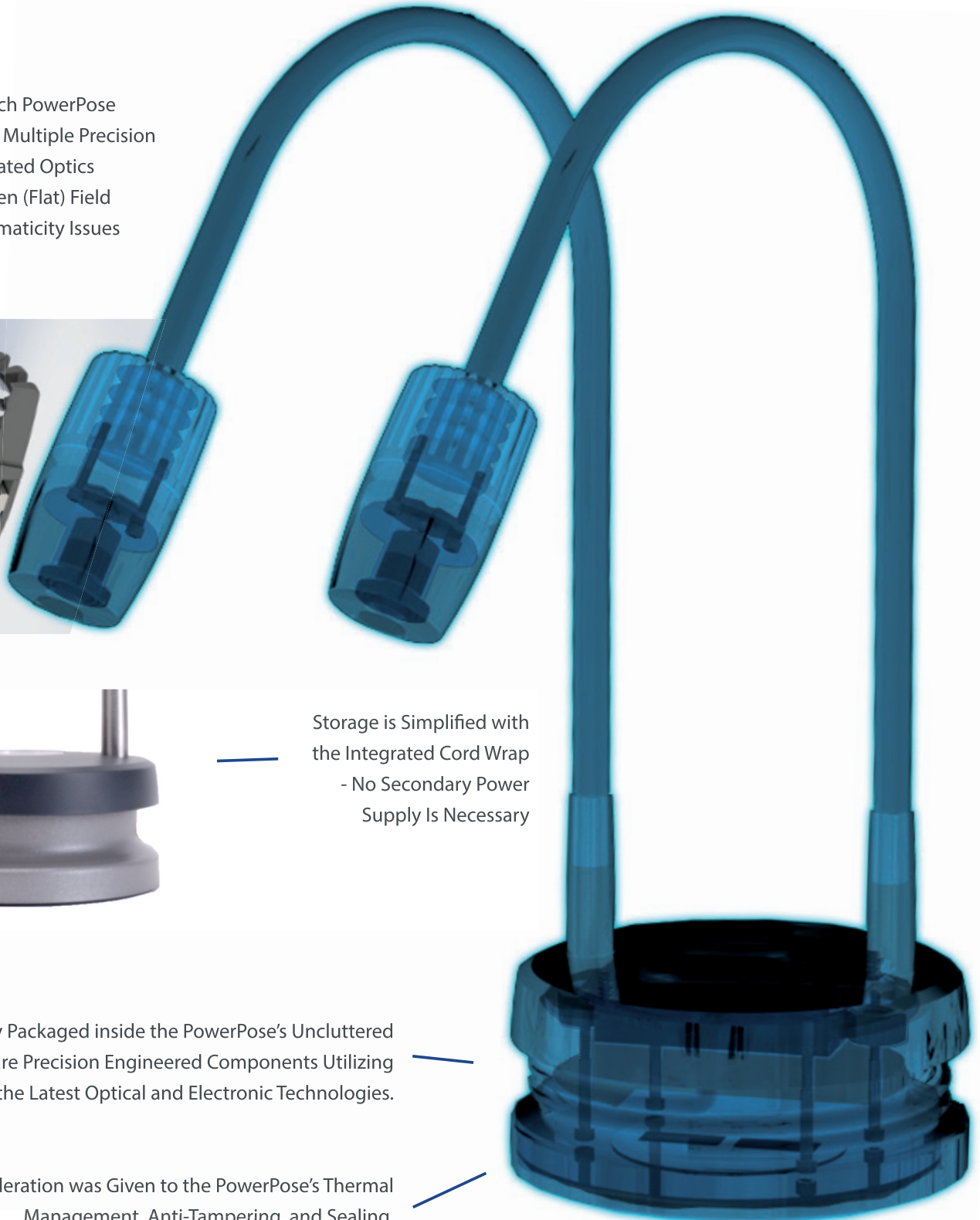
Hidden with Each PowerPose Beam Head Are Multiple Precision Ground and Coated Optics to Ensure an Even (Flat) Field Devoid of Chromaticity Issues



Storage is Simplified with the Integrated Cord Wrap - No Secondary Power Supply Is Necessary

Carefully Packaged inside the PowerPose's Uncluttered Aesthetic are Precision Engineered Components Utilizing the Latest Optical and Electronic Technologies.

Careful Consideration was Given to the PowerPose's Thermal Management, Anti-Tampering, and Sealing.



Anodic E Coating Technology from the Automotive Industry is Used to Provide Protection that is Superior to Standard Anodizing.

The Upper Surface Is Molded Using A Proprietary Blend of ESD Safe Thermoplastics in Such a Way as to Prevent Fluid Ingress in Lab Settings. The Base is Powder Coated and Contains a Zinc Coated Ballast Weight to Provide a Stable Platform Under Any Configuration.

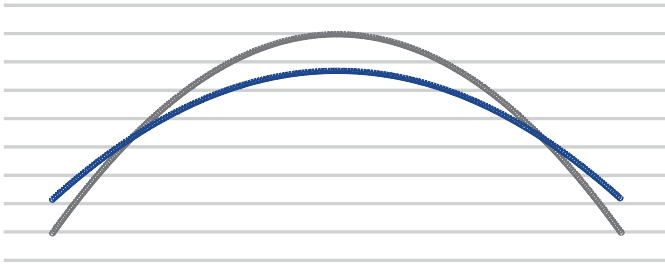
Simplicity Was Achieved With a Simple Touch / Release and Touch / Hold Button Back Illuminated with a Ring of Blue LED Lighting



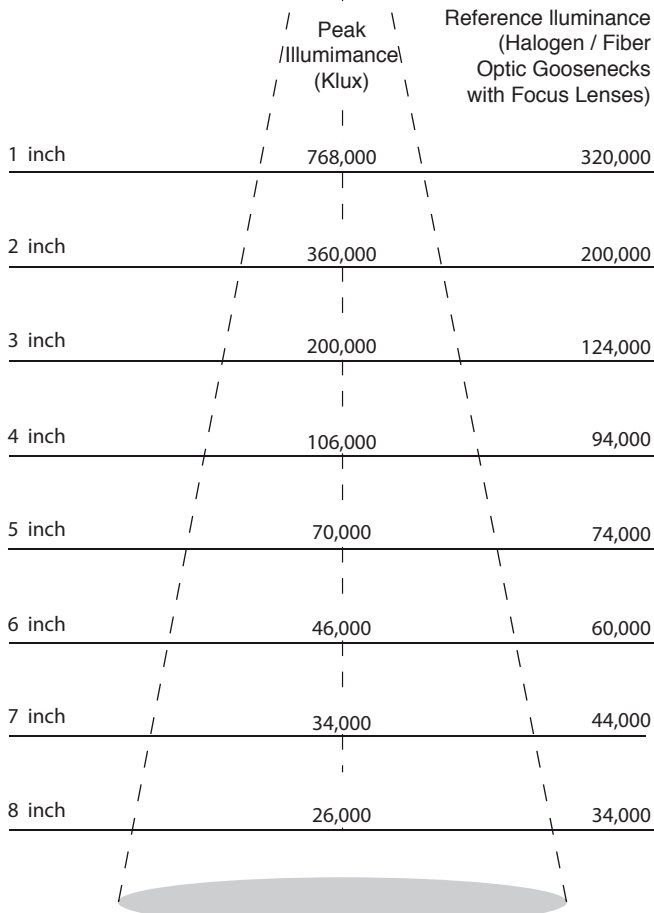
Oblique Lighting Is Required in Many Applications to Avoid Specular Reflection (Glare) or to Enhance Images of Items with Considerable Vertical Height (Relief)



Flatter More Uniform Illumination Field Than Legacy Halogen / Fiber Optic Solutions



Illuminance Profiles at Various Working Distances

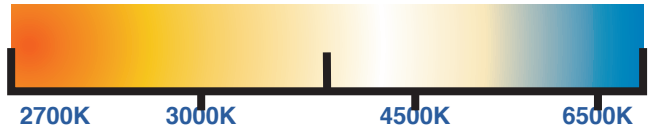


LED LIGHTING FACTS

Light Output (Lumens)	500
Watts	5
Color Rendering	90+

Various CCT, Colors Available

Correlated Color Temperature (CCT)



Input Voltage	90 - 264 VAC
---------------	--------------

Maximum Power	6 Watts
---------------	---------

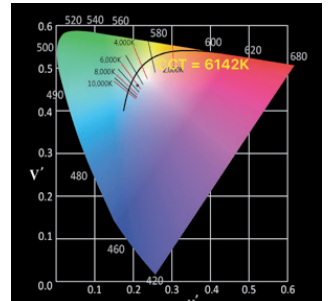
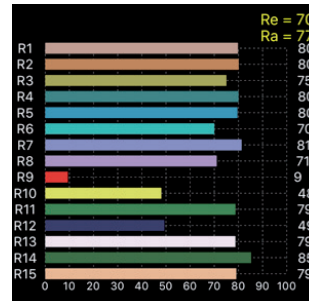
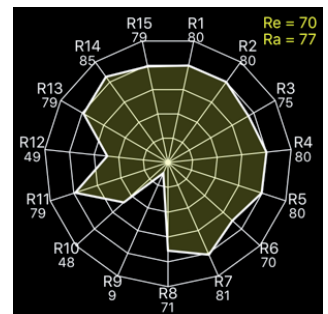
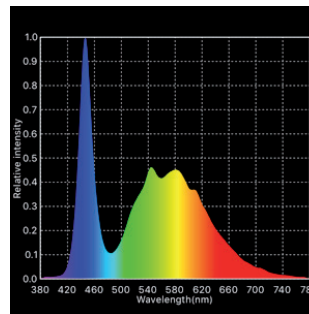
Power Cable Length	57 In. (1447.80 mm)
--------------------	---------------------

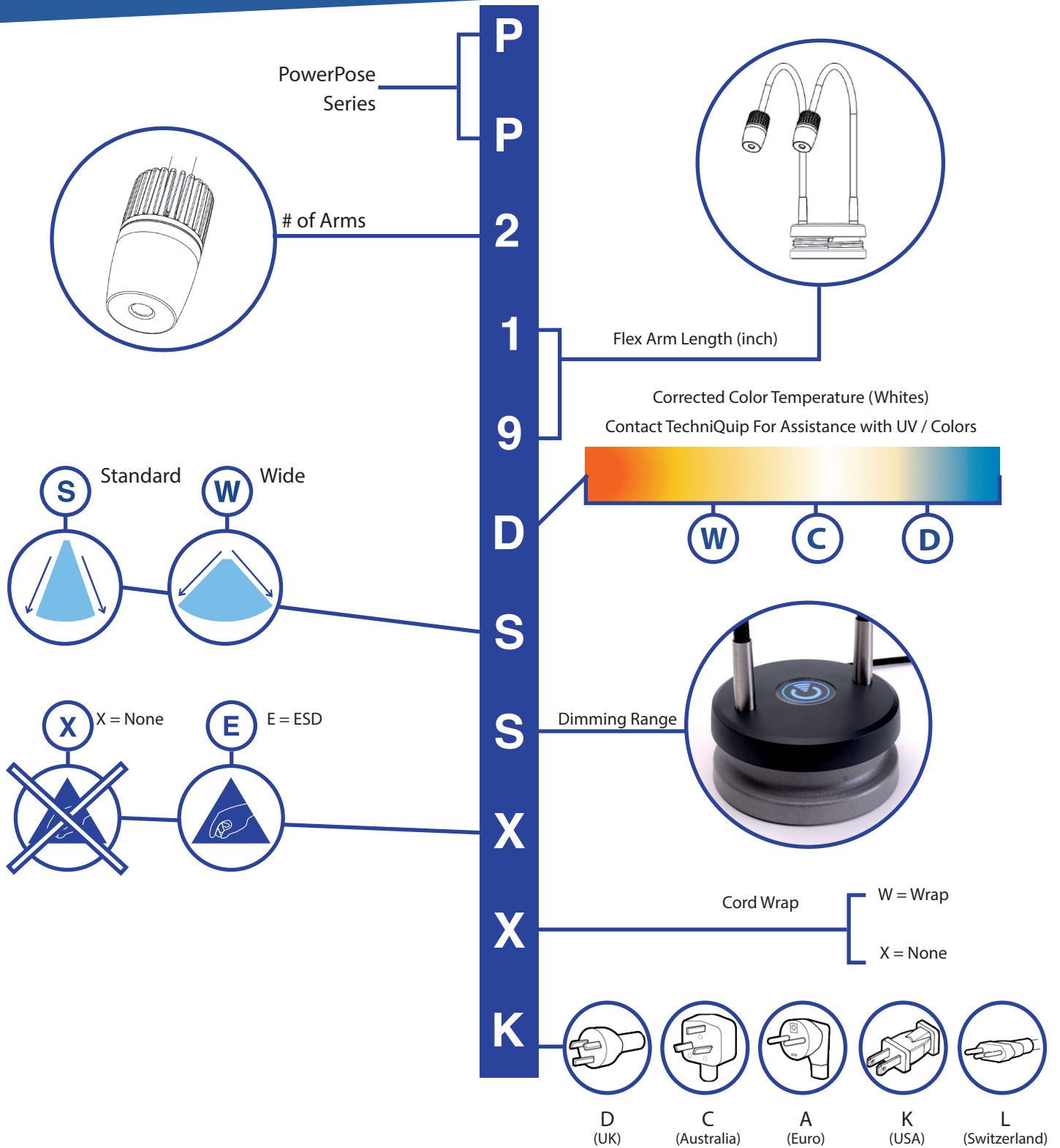
Weight	5.25 lbs (6.92 Kg)
--------	--------------------

Standard Flex Length	19 In. (482.60 mm)
----------------------	--------------------

Half Angle	15 Degrees
------------	------------

Data Below is For Daylight White
Consult TechniQuip for Others





AT THE FOREFRONT OF MODERN LIGHTING

Lighting is the midst of a dramatic renaissance - virtually all legacy technologies are falling away in favor of high-efficiency LED solutions. This product is on the forefront of that shift - replacing a halogen / fiber solution that has been the industry standard for the last 40 years.

TECHNIQUIP CORPORATION

Your company's success likely depends on the need to critically control a key aspect of lighting, no matter if that's frequency, color, intensity, uniformity, stray light, or some other factor. Or maybe you just need a durable and reliable product that will stand out in the ocean of poorly constructed / disposable products. Few companies other than TechniQuip work as hard to design and manufacture, here in the United States, the precision lighting you need.

