


## INFINITY ANALYZE Software – Sizing the Preview Resolution

### 1) Fit to Window

The size of the preview window may be altered by selecting the *Fit to Window* icon shown in Figure 1. Once this has been activated the preview window size may be changed by grabbing a corner of the window and dragging it. If the window is maximized the *Minimize/Restore* icon  at the upper right of the screen will resize the window allowing it to be reshaped.

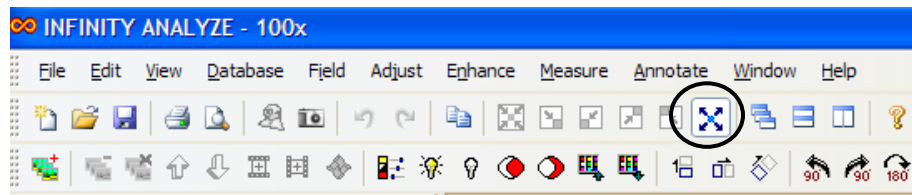


Figure 1: Fit to Window Icon

As the window size decreases from full resolution to a smaller size, the frame rates for CMOS sensors will increase\*. The frame rate readout in frames per second (fps) may be found on the bottom right of the software shown in Figure 2.

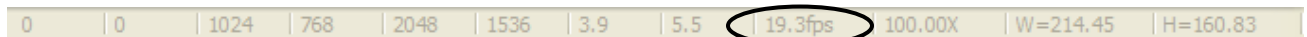



Figure 2: Preview Frame Rate

\*Please note: Frame rates are dependent on exposure times. A higher exposure rate may limit the maximum frame rate produced by the camera. As an example, the maximum frame rate for a camera with an exposure of 200 ms is 5 fps.

### 2) Image Window Size

The image preview window may also be sized by selecting the *Image Window Size...* selection under the *View* drop down menu shown in Figure 3. This may only be accessed in the *Fit to Window* mode. The feature will be grayed out if the preview window is maximized. To activate click the *Minimize/Restore* icon.  Once the *Image Window Size* option is selected a dialog box appears (Figure 4). You may now select your preview resolution.

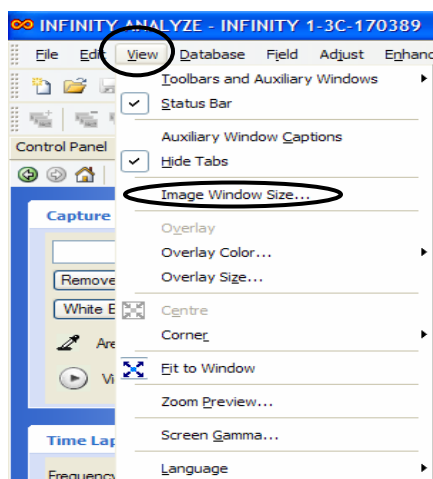


Figure 3: Image Window Size Selection

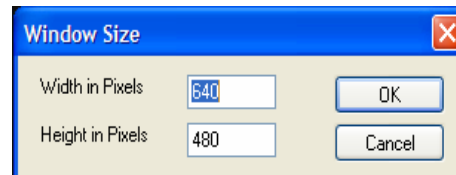


Figure 4: Image Window Size Dialog Box



Microscope World  
6122 Innovation Way  
Carlsbad, CA 92009

[www.MicroscopeWorld.com](http://www.MicroscopeWorld.com)

PHONE: 760-438-0528

FAX: 760-438-0553

TOLL FREE USA: 800-942-0528

[info@microscopeworld.com](mailto:info@microscopeworld.com)