

INFINITY ANALYZE Software – Calibration

This guide will provide users with a step-by-step method to calibrate **INFINITY ANALYZE** software. The only item required to perform an accurate calibration is a stage micrometer.

Please note: The .SIF file format retains all calibration and measurement information. Please ensure files are saved in this format if future measurements are to be taken.

Step 1: Place the stage micrometer on the microscope stage and capture an image of the required area within the field of view.

Step 2: Using the captured image of the stage micrometer as the active image, select the *Calibration* icon as shown in Figure 1.

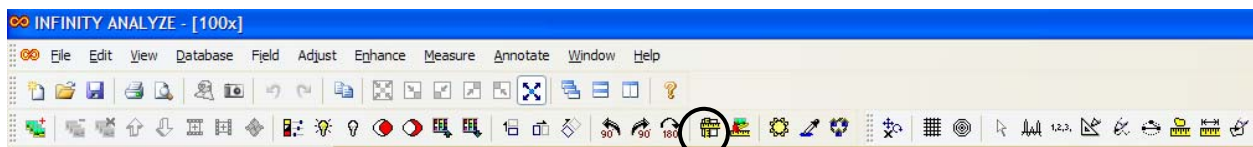


Figure 1: Calibration Icon

Once the *Calibration* icon has been selected the cursor will transform into a crosshair. Select the starting point of your calibration measurement and left click the mouse. Drag the cursor to the end point and left click the mouse a second time. A measurement line is now created and the calibration dialog box will appear as shown in Figure 2.

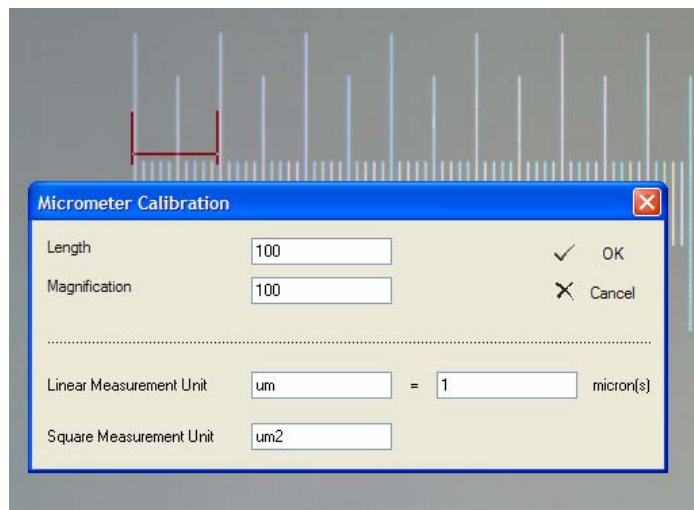


Figure 2: Calibration Measurement & Dialog Box

Step 3: Input the length measured across the stage micrometer and the magnification of the microscope optic. Next choose your Linear Measurement Unit along with the conversion to microns, for example: *Linear Measurement Unit mm = 1000 microns*. Finally choose the square measurement unit and select OK. The software is now calibrated.

Step 4: Select *Add* in the *Capture Control* box to save your calibration as shown in Figure 3. This will produce the preset name dialog box as shown in Figure 4.

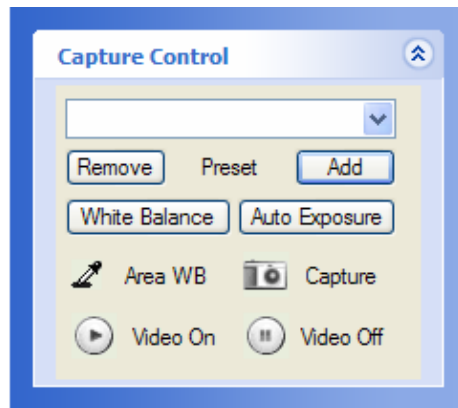


Figure 3: Capture Control Box

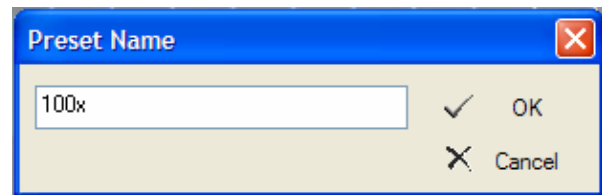


Figure 4: Preset Name Dialog Box

Choose your preset name then click OK to save the calibration data under that name. Repeat steps 1-4 for each objective on the microscope.

Step 5: For future measurements ensure that you choose the appropriate calibration from the drop down list in the *Capture Control* area prior to capturing an image, as shown in Figure 5. This ensures that the proper calibration data has been applied.

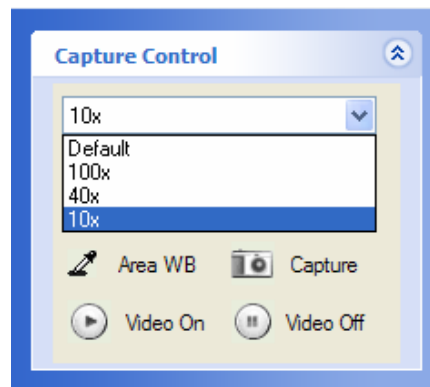


Figure 5: Calibration Choices Prior to Capture

Active calibrations are found at the bottom right of the screen in the third position from the right (Figure 6). Different calibrations may be chosen in the live preview, however once the image has been captured the calibration is fixed to ensure accuracy of measurements.

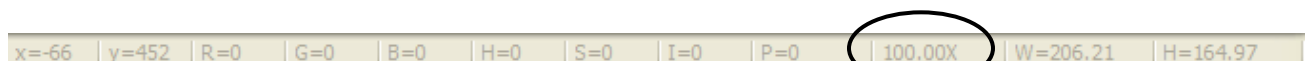


Figure 6: Active Calibration Listing



Microscope World
6122 Innovation Way
Carlsbad, CA 92009

www.MicroscopeWorld.com

PHONE: 760-438-0528

FAX: 760-438-0553

TOLL FREE USA: 800-942-0528

info@microscopeworld.com